



CONSULTANTS
ENGINEERS
TRADERS



Put your Business on
TOP GEAR

PROFILE

The thriving business lies on the bedrock of experience and expertise. Our journey began when our Founder, **M. P. Haridas** (Mechanical Engineer) started out as a humble Jr. Sales & Service Engineer at New Allenberry Works, followed by Fenner India Limited, Elecon Group, Flender Limited, Vulcan Gears as Executive Director and went on to incept **Universal Associates** in 2020 based at Anand in India.

At **Universal Associates**, we blend our knowledge of digital technology with the production process for core industries, including Mechanical Power transmission, Hydraulic Cylinders for a host of applications like Precision Machined Components, to name a few.

Our work process begins with selection of the best materials followed by sourcing of the perfect material, eventually leading to timely execution and delivery of the final project. Our team of expert engineers make this process smooth and seamless for our suppliers as well as customers.

Furthermore, our international exposure and working closely with varied Indian and multinational names in the gear industry lends us insights into the industry and the ability to tackle its day-to-day problems with professional ease.

We cater to a global clientele base and act as a procurement partner for several project needs for clients in Africa, the Middle East and Southeast Asia apart from Asian countries and continue to expand our horizons.



M. P. Haridas
Founder Director

MECHANICAL POWER TRANSMISSION

- Helical, Bevel Helical Gearboxes
- Spares for Helical, Bevel Helical
- Geared Motors
- Worm Gearbox
- Planetary Gearbox
- Straight Bevel Gears
- Sprockets

Accessories

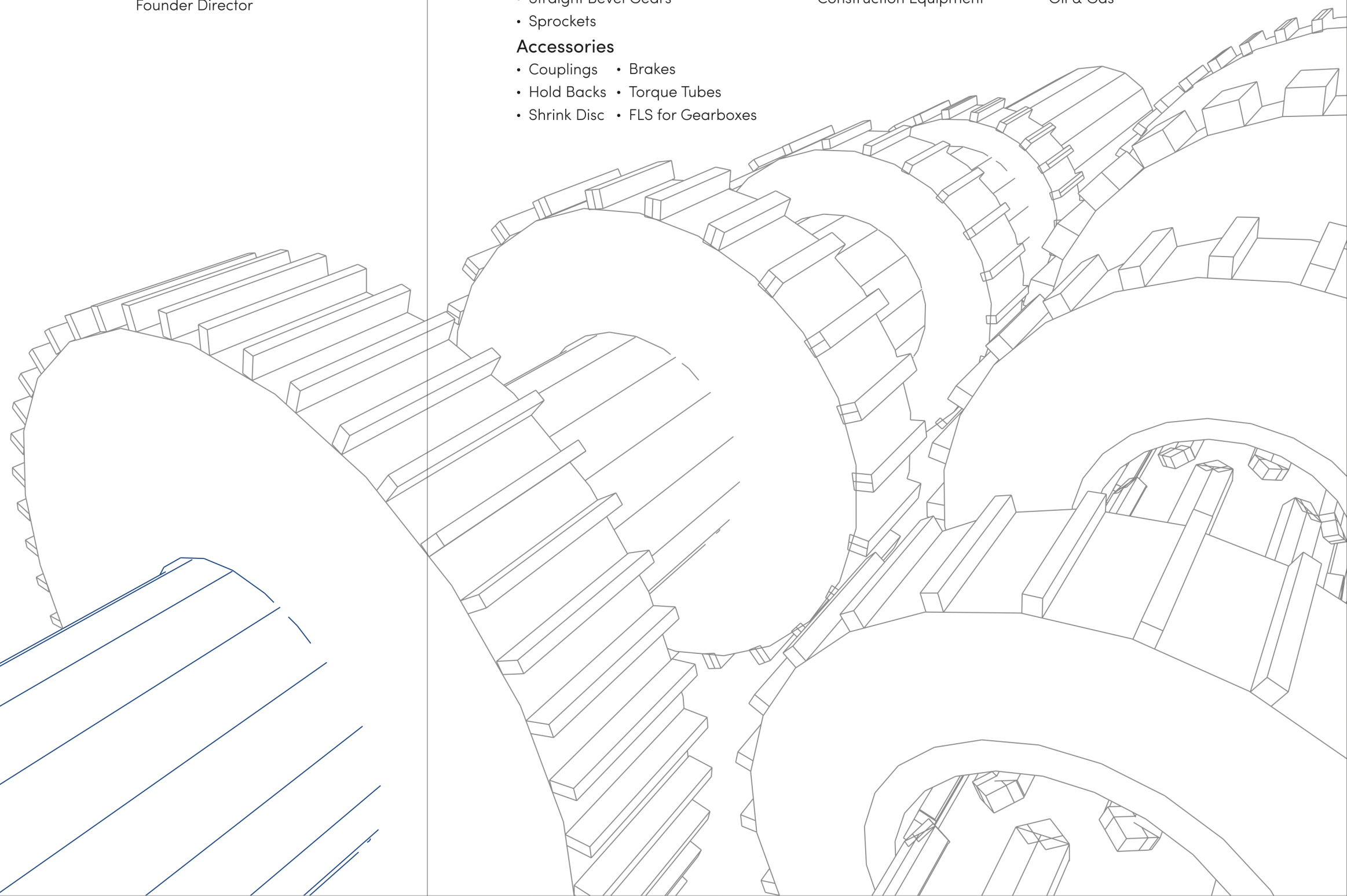
- Couplings • Brakes
- Hold Backs • Torque Tubes
- Shrink Disc • FLS for Gearboxes

HYDRAULIC CYLINDERS

- Vertical Rolling Mill
- Roller Press
- Wagon Tippler
- Excavators
- Dump Trucks
- Construction Equipment

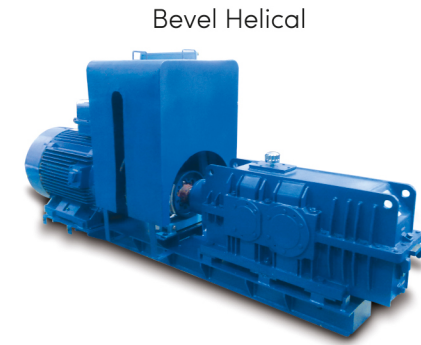
PRECISION MACHINED COMPONENTS

- Aero Space
- Defence
- Electro Mechanical
- Flow Control & Measurement
- Food & Dairy Equipment
- Oil & Gas





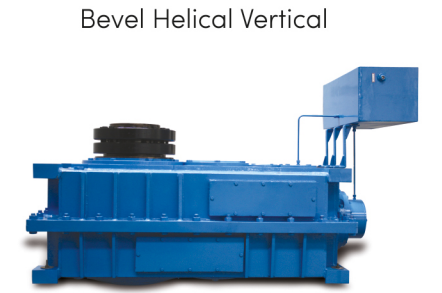
MECHANICAL POWER TRANSMISSION



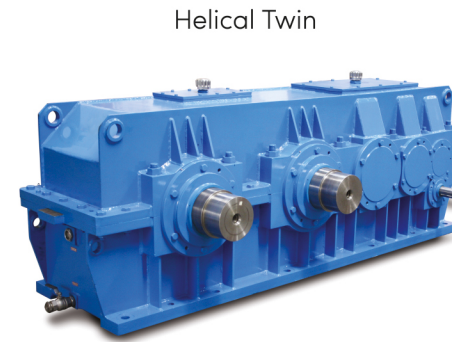
Bevel Helical



Bevel Planetary Vertical Mill GB



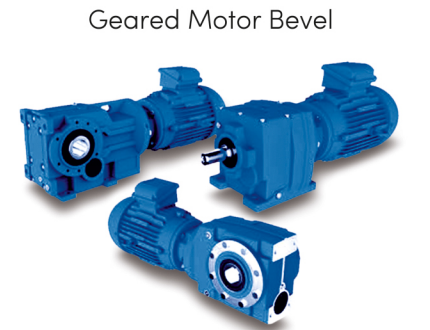
Bevel Helical Vertical



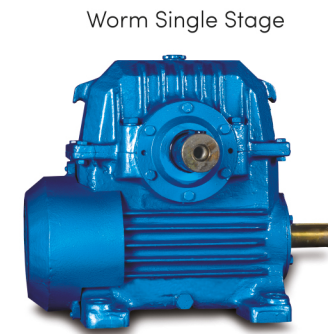
Helical Twin



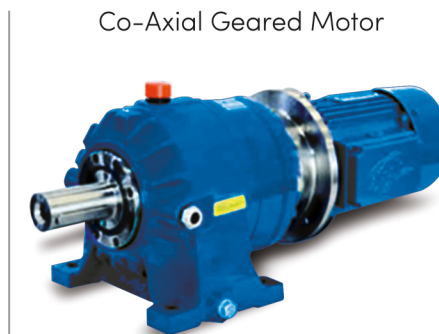
Worm Double Stage



Geared Motor Bevel



Worm Single Stage



Co-Axial Geared Motor

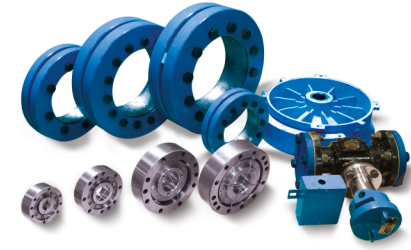


Planetary Gearbox for Roller Press

Spare Gears Double Helical



Accessories



Spare Gears & Pinions



Accessories Flexible Gear Coupling



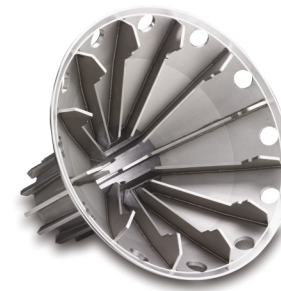
In Mechanical Power Transmission, we offer optimum "Drive Solutions" to various core industries. Our ability to competently advise customers with a focus on their individual requirements rests on our extensive application know-how. We stand for our comprehensive know-how in all their queries of mechanical and electrical drive technology and for the best quality in products and services in industry segments like Material Handling Equipment, Cement, Coal, Steel, Sugar Mill, Food Processing & Dairy Plants, Printing Machinery, etc.



PRECISION MACHINED COMPONENTS

Sub-assemblies with extreme critical tolerances, stringent quality and traceability requirements, documentation, and committed on-time deliveries. Inspection and non-destructive testing are critical stages of the operation at our facility. Our QA engineers are Level II certified for NDT testing such as MPI, LPE, and UT. We also offer 3.1 certification through third-party inspection arrangements with TUV/SGS. We ensure quick turnaround and supply with shortest lead times. We machine exotic materials such as Inconel, Titanium, Monel, Duplex Steels, Berillium Copper, 9 Chrome, 13 Chrome steels, etc. We also provide Ferrous – Non-ferrous Castings from Green Sand, Investment, Gravity, Pressure Die Castings, Open Die and Close Die Forgings and Machining.

Dairy



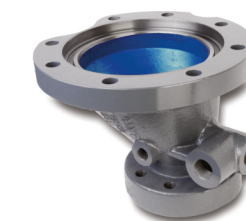
Oil & gas



Flow Control & Measurement



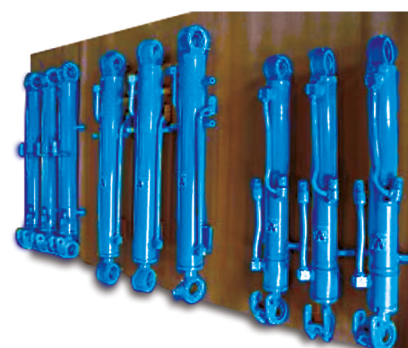
Electrmechanical Equipment



Our principals are manufacturers of high quality and premium hydraulic cylinders with state of the art facilities for profile gas cutting, CNC, VMC, honing, cylindrical grinding, induction hardening, chrome plating, pressure testing, painting, etc. We supply all types of superior quality hydraulic cylinders which are used in hydraulic excavators of Cat/O&K, Komatsu, Hitachi, Volvo, etc. (From 7 ton to 300 ton class of excavators).

HYDRAULIC CYLINDERS

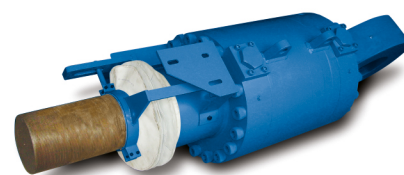
Hydraulic-Cylinders



Hydraulic Cylinder for VRM



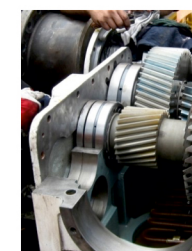
Hydraulic Cylinder for Roller tension



Hydraulic Cylinder



REPAIRS & SERVICES



Universal offers comprehensive services for gear units and coupling over their entire life cycle. In addition to our classic services like spares & services, repairs & maintenance, retrofit & modernisation options, technical support, we help you shape your digital future with our diagnostic services.

Our team of associates can be harnessed to augment technical capabilities of operating personnel and line management staff so as to maximize equipment life. In this regard training modules are available on gears, bearings, lubricants etc along with likely cause of failures and options to eradicate or substantially minimize failures thus downtime

With a proven track record of over 30 years with companies like Flender Ltd., Suzlon Energy Ltd., David Brown Bharat Forge and Bevel Gears Ind., **Rupak Mitra** - our Service Consultant, was actively involved in the development of many Gearboxes for MW class of Wind Turbine, Steam turbine, Coal pulveriser gearboxes & critical components of Aerospace and Defence application.

www.uni-associates.com




**UNIVERSAL
ASSOCIATES**

Corp. Office: 26, Vallabh Park, Off. Vidyanagar, Karamsad Road
Vallabhvidyanagar 388 120. Anand. Gujarat, INDIA.
+91 88497 30611 | haridas@uni-associates.com